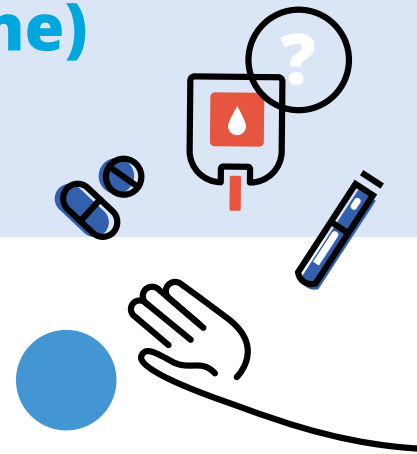


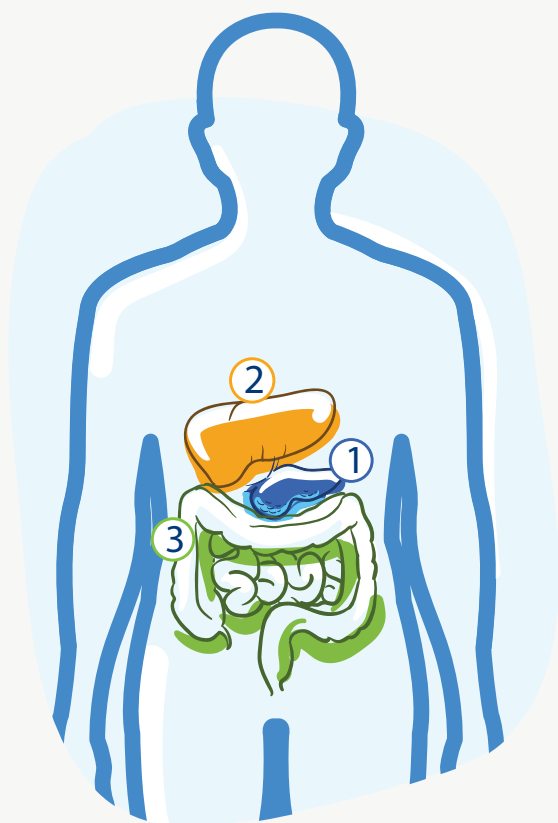
Type 2 Diabetes

AND THE ROLE OF GLP-1 HORMONE (glucagon-like peptide-1 hormone)



GLP-1 is a naturally occurring hormone in the body that works with the pancreas to release insulin to keep (blood sugar) in balance.¹

If you have type 2 diabetes, your body may not be responding to GLP-1 properly, and your blood glucose can get too high.²



In people with type 2 diabetes, other body parts like the liver and the gut can be affected by how GLP-1 and the pancreas work together to manage blood glucose.³

1 The pancreas

2 The liver

3 The gut

*Wilding JP. Int J Clin Pract. 2014 Jun;68(6):682-91.

References: 1. Andersen A et al. Nat Rev Endocrinol. 2018 Jul;14(7):390-403. | 2. Holst JJ et al. Diabetes Care. 2011 May;34 Suppl 2(Suppl 2):S251-7 | 3. DeFronzo RA. Diabetes. 2009 Apr;58(4):773-95.



Looking for answers about diabetes management?
Find helpful info, tools, and resources on aboutdiabetes.in

**about
diabetes**

